



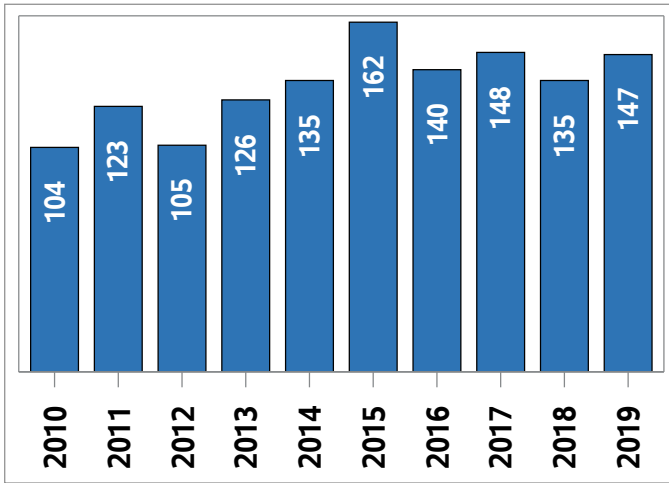
**Woodstock - Ingersoll
Residential Market Activity Report
July 2019**



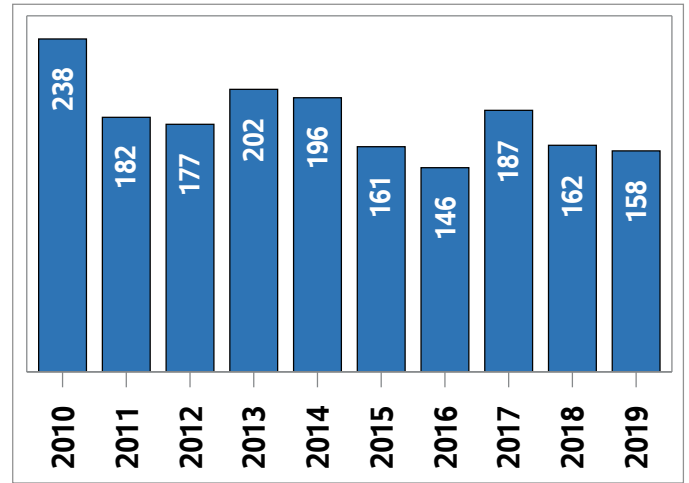
Prepared for the Woodstock - Ingersoll & District Real Estate Board by the Canadian Real Estate Association

Woodstock - Ingersoll and District MLS® Residential Market Activity

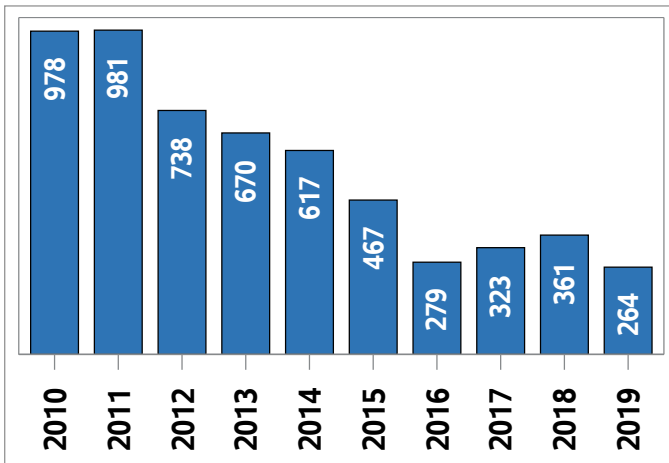
Sales Activity (July only)



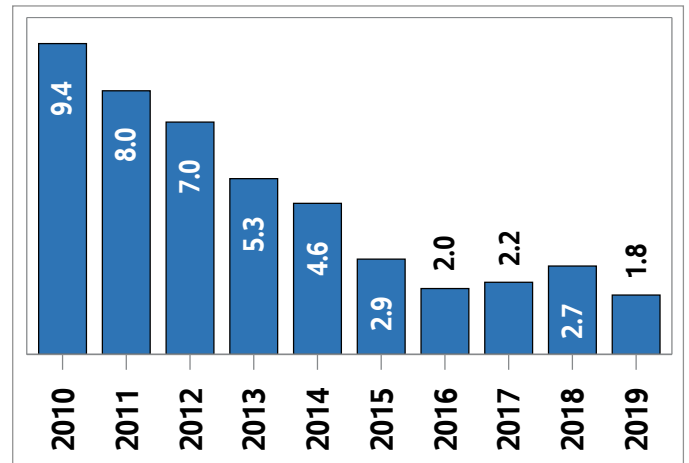
New Listings (July only)



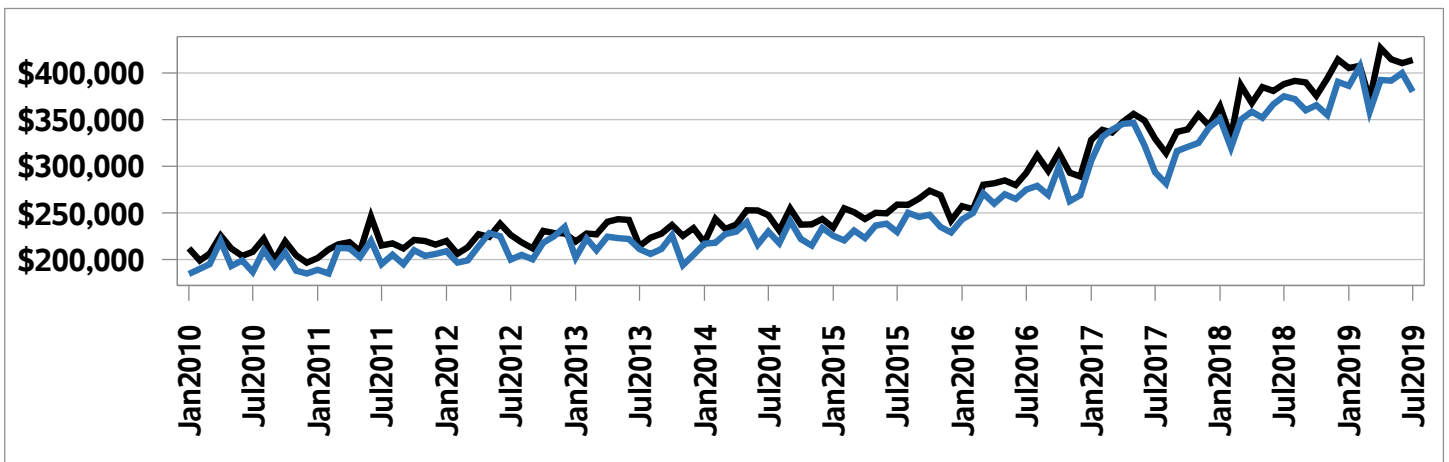
Active Listings (July only)



Months of Inventory (July only)

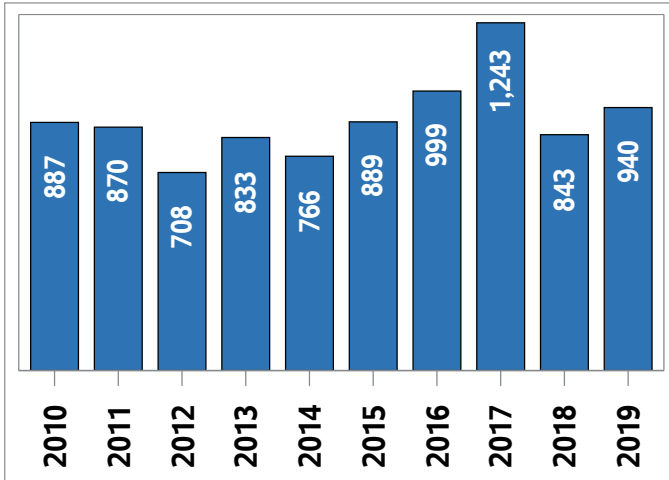


Average Price and Median Price

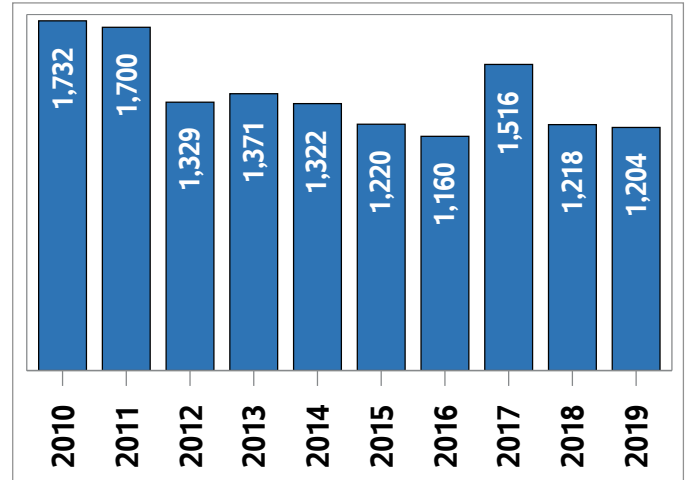


Woodstock - Ingersoll and District MLS® Residential Market Activity

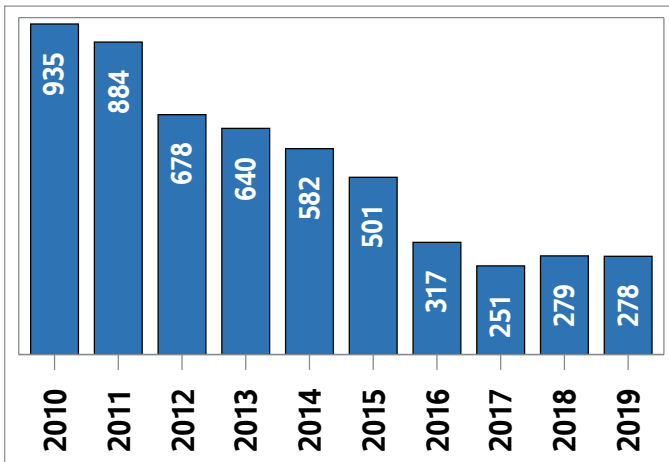
Sales Activity (July Year-to-date)



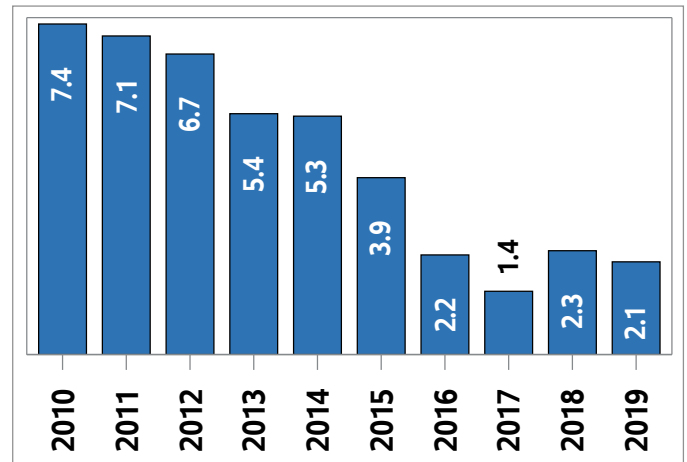
New Listings (July Year-to-date)



Active Listings ¹ (July Year-to-date)



Months of Inventory ² (July Year-to-date)



¹ The year-to-date active listings figure is a monthly average of the number of homes on the market at the end of each month so far this year

² Average active listings January to the current month/average of sales January to the current month

Woodstock - Ingersoll and District MLS® Residential Market Activity

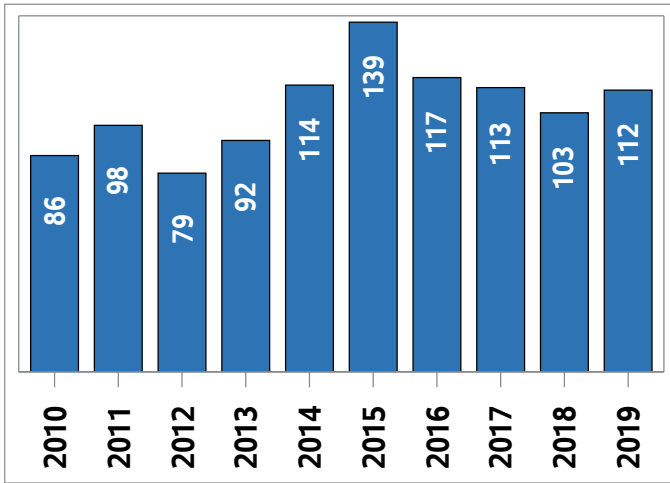
Actual	July 2019	Compared to ⁶					
		July 2018	July 2017	July 2016	July 2014	July 2012	July 2009
Sales Activity	147	8.9	-0.7	5.0	8.9	40.0	8.1
Dollar Volume	\$60,839,253	16.1	24.8	48.4	82.0	156.0	119.1
New Listings	158	-2.5	-15.5	8.2	-19.4	-10.7	-41.7
Active Listings	264	-26.9	-18.3	-5.4	-57.2	-64.2	-75.5
Sales to New Listings Ratio ¹	93.0	83.3	79.1	95.9	68.9	59.3	50.2
Months of Inventory ²	1.8	2.7	2.2	2.0	4.6	7.0	7.9
Average Price	\$413,872	6.6	25.6	41.3	67.1	82.9	102.7
Median Price	\$380,000	1.3	29.5	38.2	65.2	90.0	94.9
Sales to List Price Ratio	100.8	99.8	99.0	99.7	97.2	96.8	96.3
Median Days on Market	21.0	21.0	22.0	21.5	55.0	56.0	64.0

Year-to-date	July 2019	Compared to ⁶					
		July 2018	July 2017	July 2016	July 2014	July 2012	July 2009
Sales Activity	940	11.5	-24.4	-5.9	22.7	32.8	32.2
Dollar Volume	\$384,333,498	21.5	-9.8	38.1	105.9	143.6	164.5
New Listings	1,204	-1.1	-20.6	3.8	-8.9	-9.4	-26.7
Active Listings ³	278	-0.4	10.8	-12.4	-52.3	-59.0	-72.3
Sales to New Listings Ratio ⁴	78.1	69.2	82.0	86.1	57.9	53.3	43.3
Months of Inventory ⁵	2.1	2.3	1.4	2.2	5.3	6.7	9.9
Average Price	\$408,865	9.0	19.3	46.8	67.8	83.5	100.0
Median Price	\$389,600	9.0	18.1	47.0	71.3	84.3	105.1
Sales to List Price Ratio	100.6	100.0	102.2	98.9	97.4	97.1	95.8
Median Days on Market	20.0	17.0	14.0	26.0	48.0	52.0	64.0

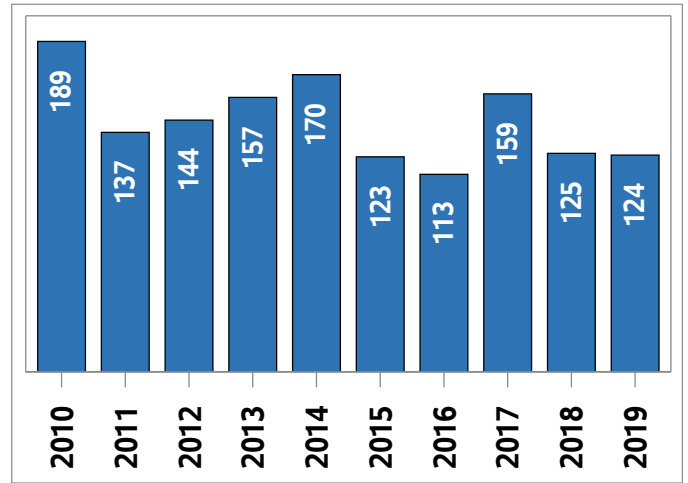
Woodstock - Ingersoll and District

MLS® Single Detached Market Activity

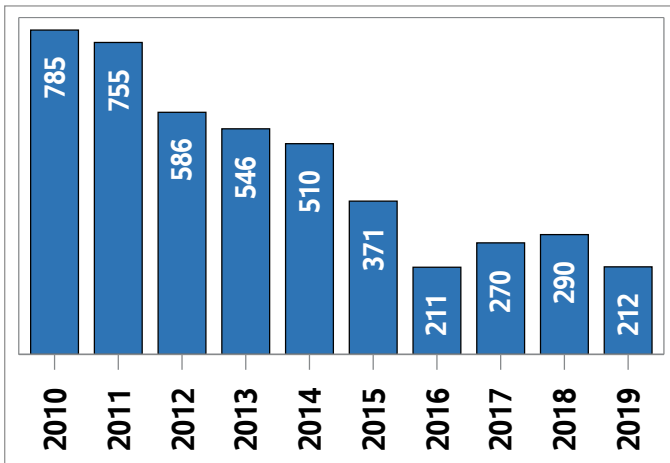
Sales Activity (July only)



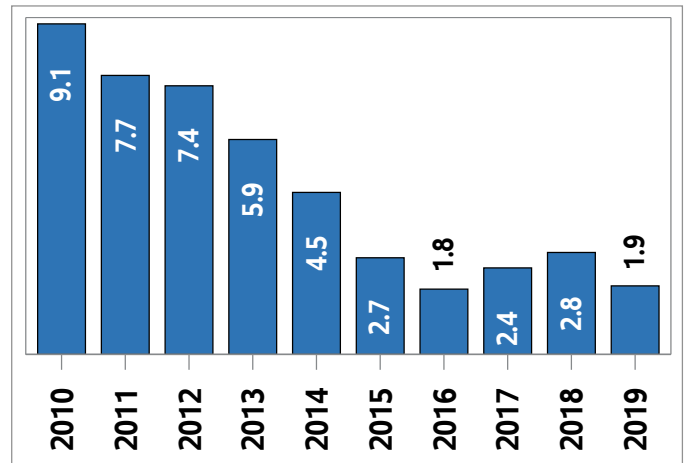
New Listings (July only)



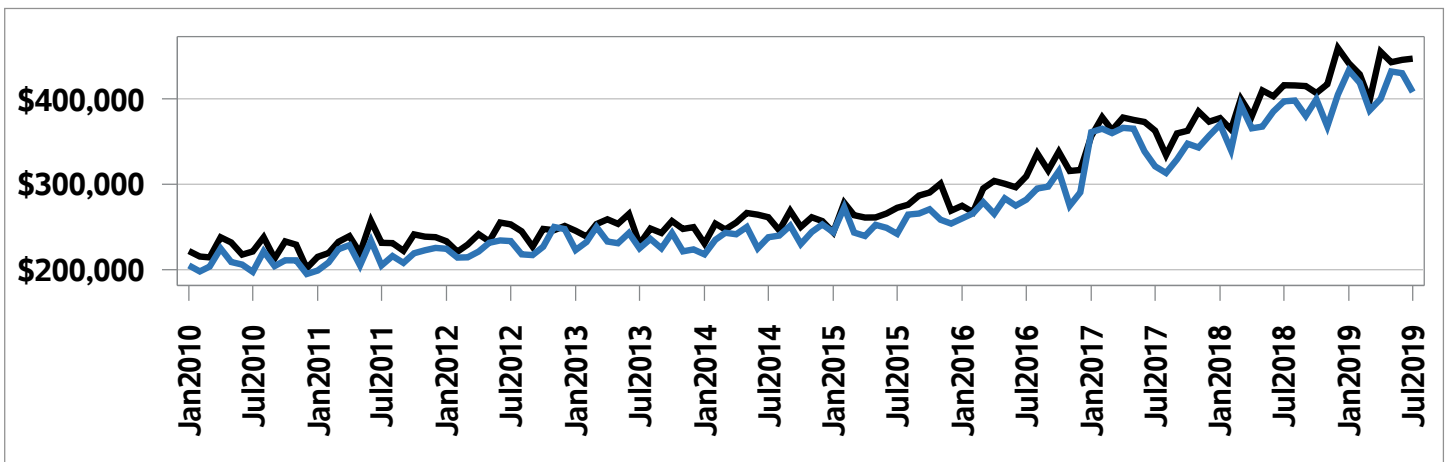
Active Listings (July only)



Months of Inventory (July only)



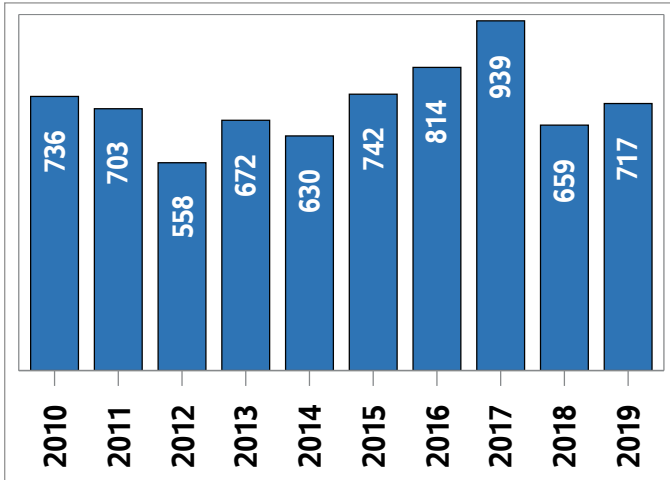
Average Price and Median Price



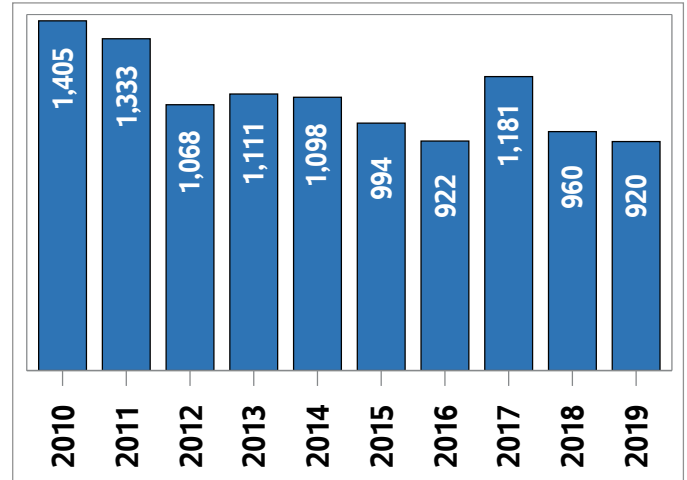
Woodstock - Ingersoll and District

MLS® Single Detached Market Activity

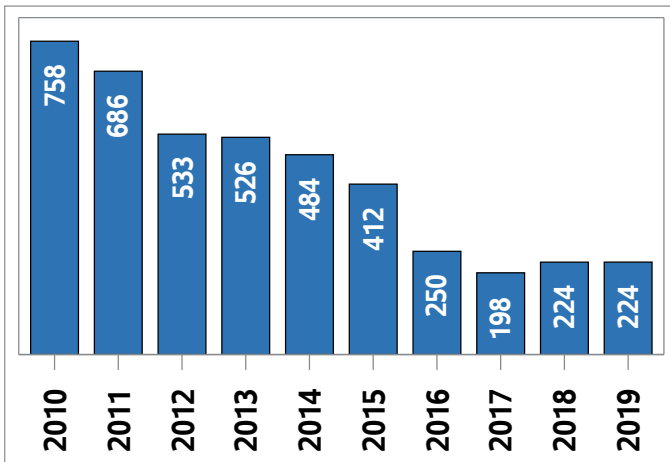
Sales Activity (July Year-to-date)



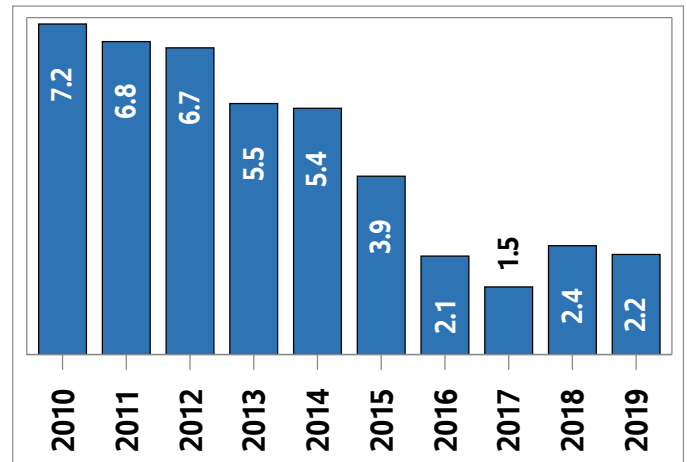
New Listings (July Year-to-date)



Active Listings ¹ (July Year-to-date)



Months of Inventory ² (July Year-to-date)



¹ The year-to-date active listings figure is a monthly average of the number of homes on the market at the end of each month so far this year

² Average active listings January to the current month/average of sales January to the current month

Woodstock - Ingersoll and District MLS® Single Detached Market Activity

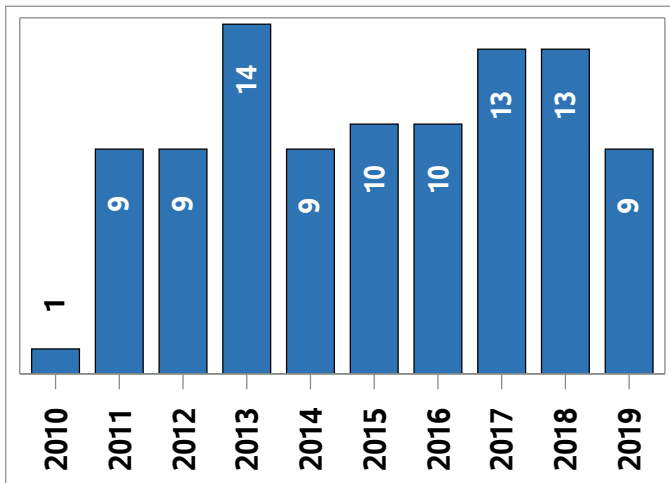
Actual	July 2019	Compared to ⁶					
		July 2018	July 2017	July 2016	July 2014	July 2012	July 2009
Sales Activity	112	8.7	-0.9	-4.3	-1.8	41.8	-4.3
Dollar Volume	\$50,066,350	16.9	22.2	38.3	68.0	150.5	101.5
New Listings	124	-0.8	-22.0	9.7	-27.1	-13.9	-45.9
Active Listings	212	-26.9	-21.5	0.5	-58.4	-63.8	-75.8
Sales to New Listings Ratio ¹	90.3	82.4	71.1	103.5	67.1	54.9	51.1
Months of Inventory ²	1.9	2.8	2.4	1.8	4.5	7.4	7.5
Average Price	\$447,021	7.5	23.2	44.5	71.0	76.7	110.5
Median Price	\$407,950	2.8	27.1	44.7	71.4	74.7	104.0
Sales to List Price Ratio	100.7	99.3	99.1	99.5	97.1	96.8	96.0
Median Days on Market	22.5	23.0	20.0	22.0	55.5	49.0	64.0

Year-to-date	July 2019	Compared to ⁶					
		July 2018	July 2017	July 2016	July 2014	July 2012	July 2009
Sales Activity	717	8.8	-23.6	-11.9	13.8	28.5	22.4
Dollar Volume	\$314,799,236	20.7	-9.5	30.9	94.0	136.1	147.1
New Listings	920	-4.2	-22.1	-0.2	-16.2	-13.9	-31.9
Active Listings ³	224	0.1	13.1	-10.5	-53.7	-58.1	-72.6
Sales to New Listings Ratio ⁴	77.9	68.6	79.5	88.3	57.4	52.2	43.4
Months of Inventory ⁵	2.2	2.4	1.5	2.1	5.4	6.7	9.7
Average Price	\$439,051	10.9	18.5	48.6	70.5	83.8	102.0
Median Price	\$417,000	11.2	17.5	51.6	75.1	85.3	108.5
Sales to List Price Ratio	100.5	99.9	102.0	98.8	97.5	97.0	95.7
Median Days on Market	22.0	17.0	13.0	25.0	47.5	50.0	64.0

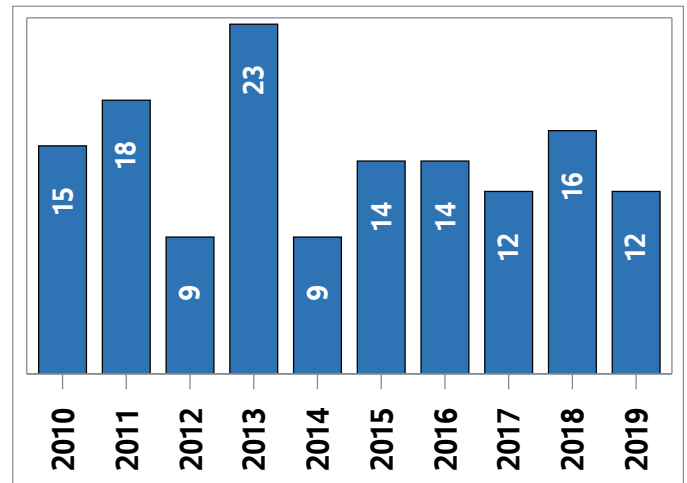
Woodstock - Ingersoll and District

MLS® Semi-Detached Market Activity

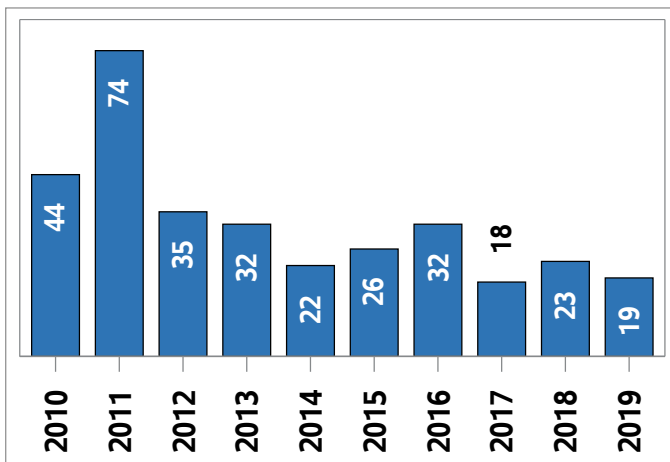
Sales Activity (July only)



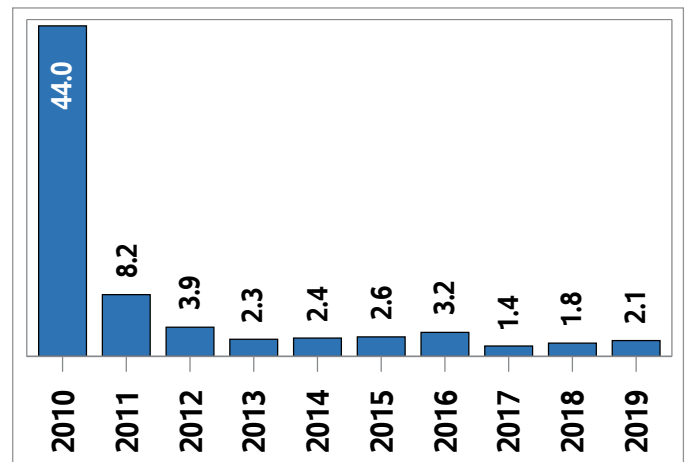
New Listings (July only)



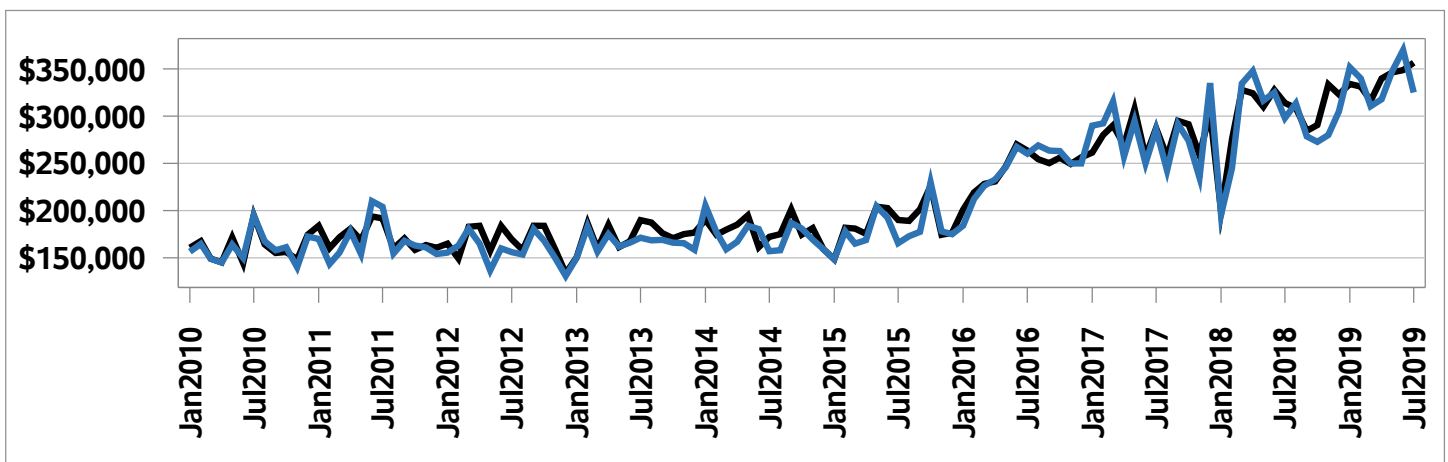
Active Listings (July only)



Months of Inventory (July only)



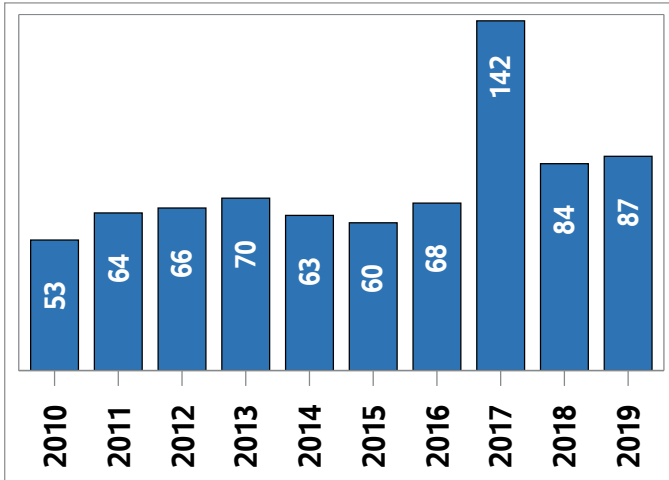
Average Price and Median Price



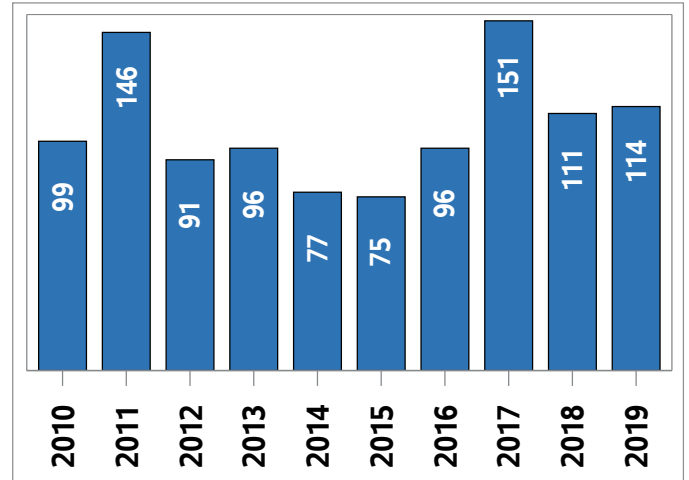
Woodstock - Ingersoll and District

MLS® Semi-Detached Market Activity

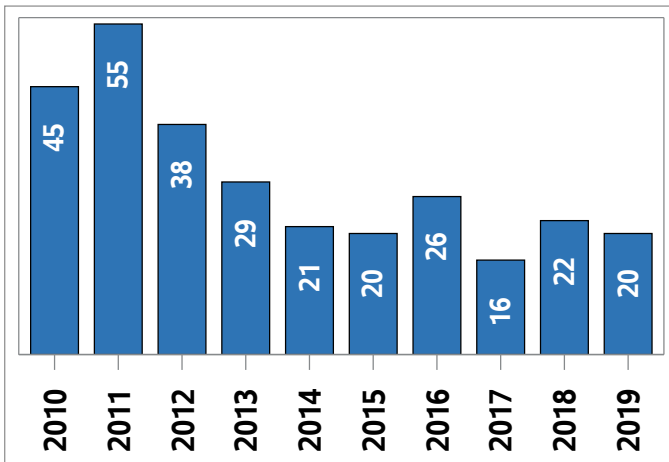
Sales Activity (July Year-to-date)



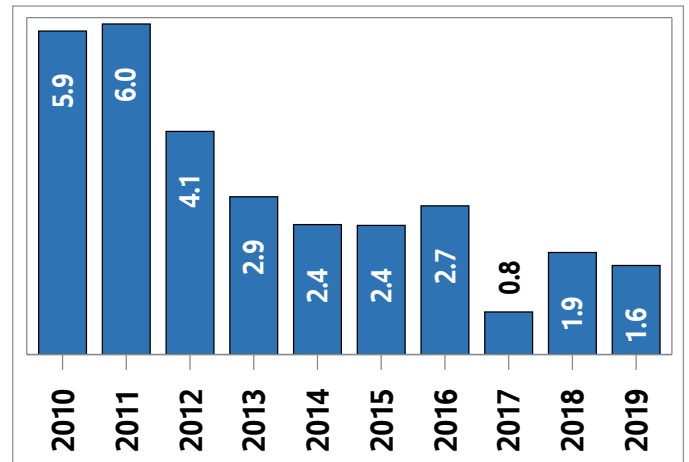
New Listings (July Year-to-date)



Active Listings ¹ (July Year-to-date)



Months of Inventory ² (July Year-to-date)



¹ The year-to-date active listings figure is a monthly average of the number of homes on the market at the end of each month so far this year

² Average active listings January to the current month/average of sales January to the current month

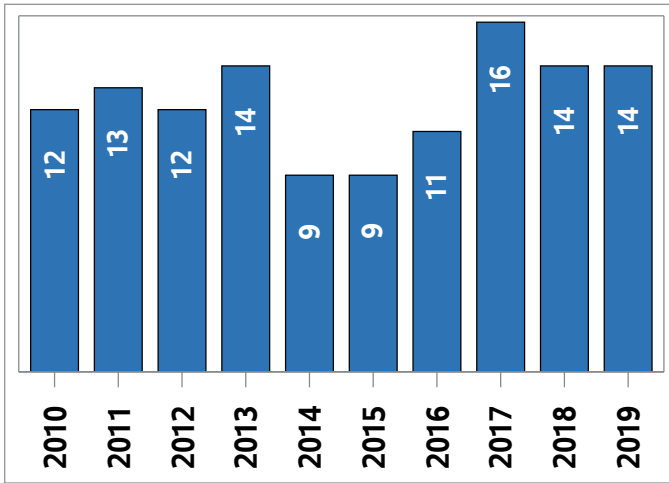
Woodstock - Ingersoll and District MLS® Semi-Detached Market Activity

Actual	July 2019	Compared to ⁶					
		July 2018	July 2017	July 2016	July 2014	July 2012	July 2009
Sales Activity	9	-30.8	-30.8	-10.0	0.0	0.0	-18.2
Dollar Volume	\$3,208,900	-21.4	-14.1	21.8	107.1	110.2	62.9
New Listings	12	-25.0	0.0	-14.3	33.3	33.3	-20.0
Active Listings	19	-17.4	5.6	-40.6	-13.6	-45.7	-61.2
Sales to New Listings Ratio ¹	75.0	81.3	108.3	71.4	100.0	100.0	73.3
Months of Inventory ²	2.1	1.8	1.4	3.2	2.4	3.9	4.5
Average Price	\$356,544	13.6	24.1	35.3	107.1	110.2	99.1
Median Price	\$325,000	9.1	13.6	24.9	107.0	108.3	76.6
Sales to List Price Ratio	101.3	101.6	101.5	100.2	97.5	98.1	99.6
Median Days on Market	16.0	15.0	20.0	15.0	21.0	60.0	130.0

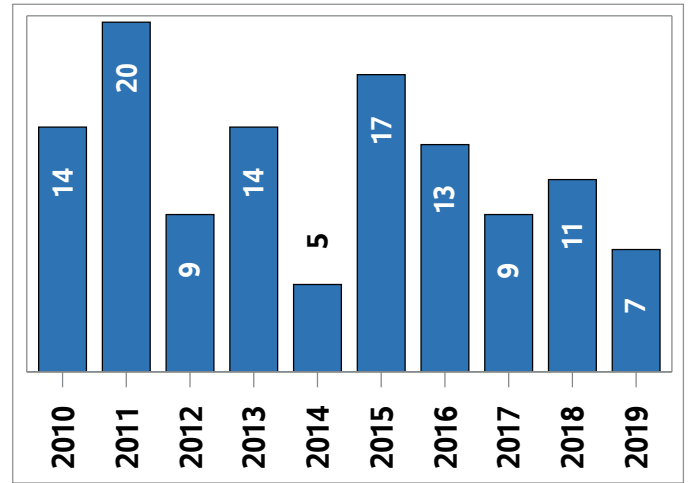
Year-to-date	July 2019	Compared to ⁶					
		July 2018	July 2017	July 2016	July 2014	July 2012	July 2009
Sales Activity	87	3.6	-38.7	27.9	38.1	31.8	74.0
Dollar Volume	\$29,600,503	13.6	-25.9	79.3	160.2	159.0	276.9
New Listings	114	2.7	-24.5	18.8	48.1	25.3	18.8
Active Listings ³	20	-9.6	28.2	-23.4	-5.4	-47.4	-63.6
Sales to New Listings Ratio ⁴	76.3	75.7	94.0	70.8	81.8	72.5	52.1
Months of Inventory ⁵	1.6	1.9	0.8	2.7	2.4	4.1	7.7
Average Price	\$340,236	9.7	21.0	40.2	88.4	96.5	116.6
Median Price	\$345,500	10.9	22.6	43.4	98.6	115.9	120.1
Sales to List Price Ratio	101.6	101.3	103.6	99.7	97.4	97.9	96.7
Median Days on Market	16.0	14.0	14.0	20.5	30.0	47.0	74.5

Woodstock - Ingersoll and District MLS® Condo Market Activity

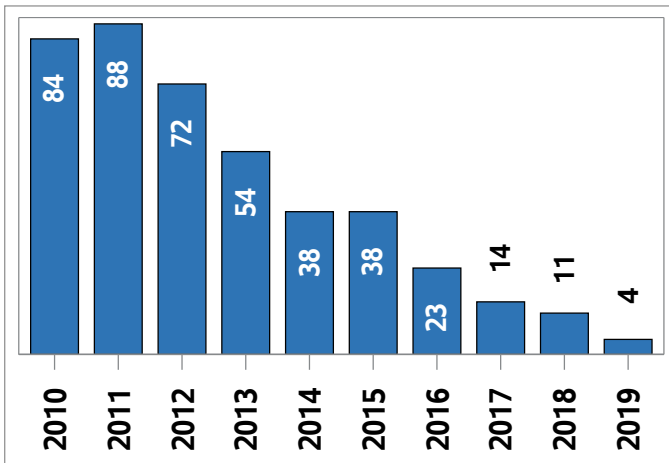
Sales Activity (July only)



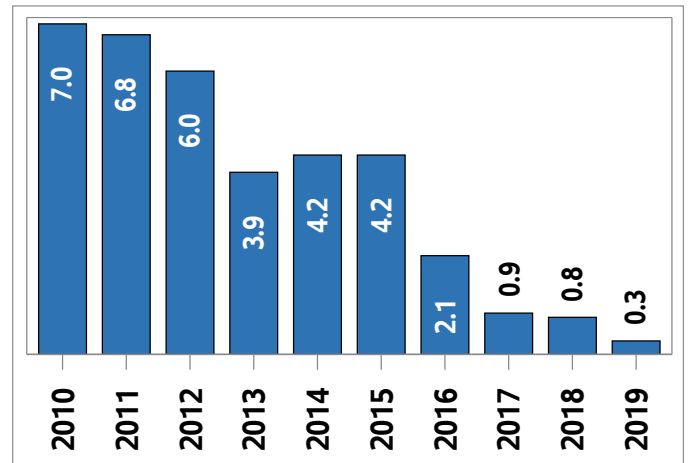
New Listings (July only)



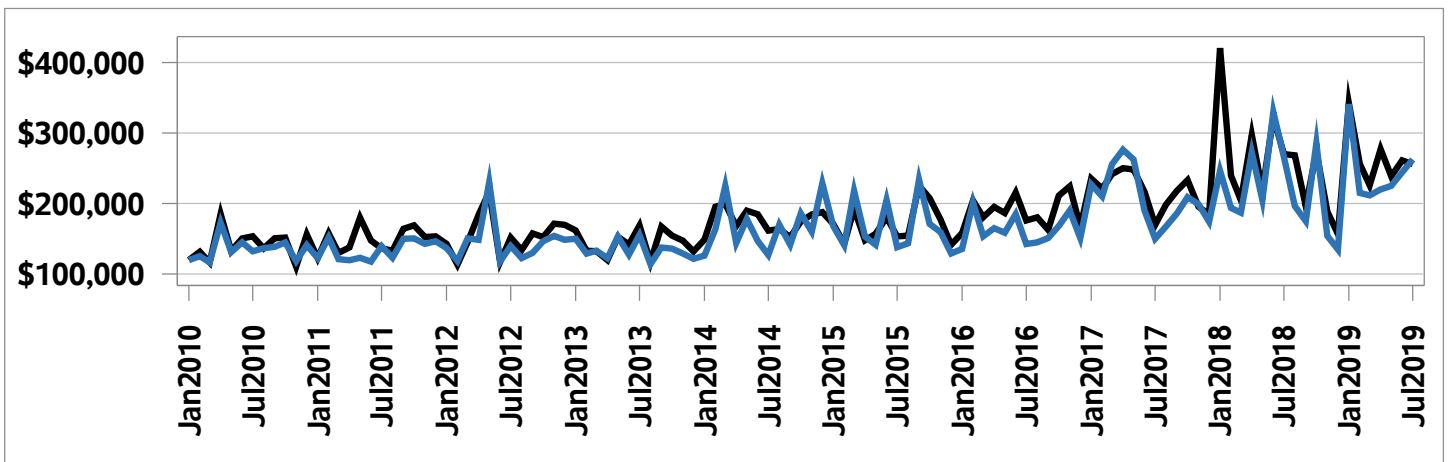
Active Listings (July only)



Months of Inventory (July only)

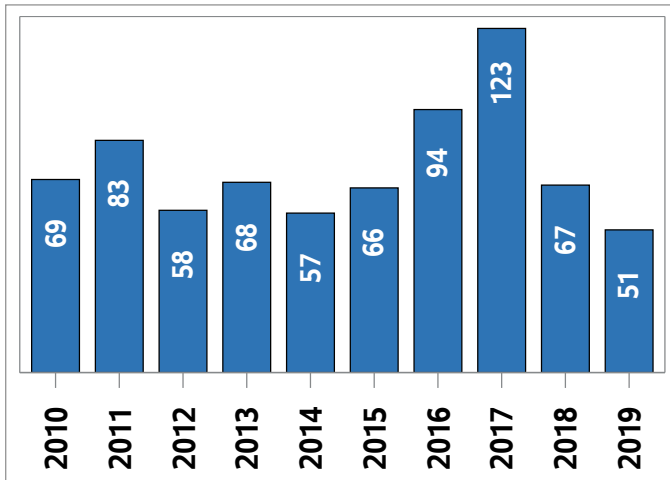


Average Price and Median Price

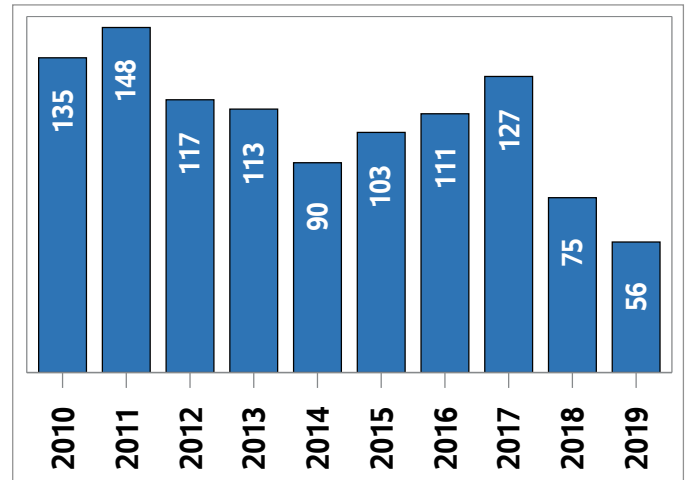


Woodstock - Ingersoll and District MLS® Condo Market Activity

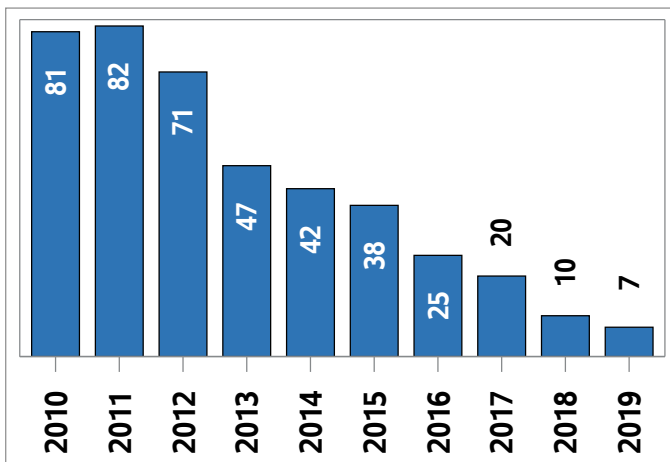
Sales Activity (July Year-to-date)



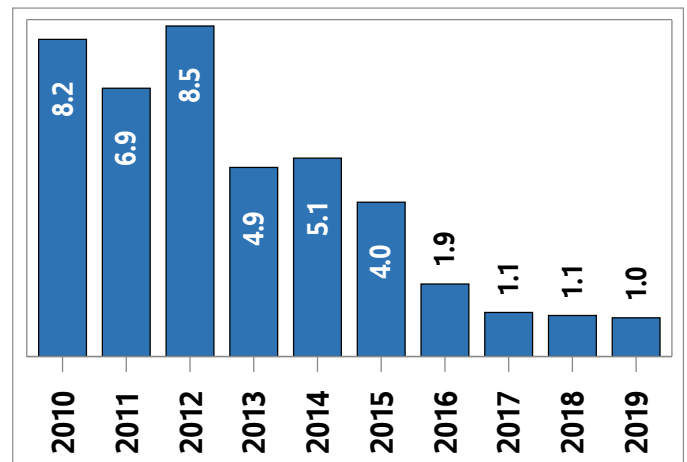
New Listings (July Year-to-date)



Active Listings ¹ (July Year-to-date)



Months of Inventory ² (July Year-to-date)



¹ The year-to-date active listings figure is a monthly average of the number of homes on the market at the end of each month so far this year

² Average active listings January to the current month/average of sales January to the current month

Woodstock - Ingersoll and District MLS® Condo Market Activity

Actual	July 2019	Compared to ⁶					
		July 2018	July 2017	July 2016	July 2014	July 2012	July 2009
Sales Activity	14	0.0	-12.5	27.3	55.6	16.7	180.0
Dollar Volume	\$3,583,415	-5.2	32.1	85.2	146.5	96.9	433.6
New Listings	7	-36.4	-22.2	-46.2	40.0	-22.2	-41.7
Active Listings	4	-63.6	-71.4	-82.6	-89.5	-94.4	-95.7
Sales to New Listings Ratio ¹	200.0	127.3	177.8	84.6	180.0	133.3	41.7
Months of Inventory ²	0.3	0.8	0.9	2.1	4.2	6.0	18.8
Average Price	\$255,958	-5.2	51.0	45.5	58.4	68.8	90.6
Median Price	\$262,500	-1.3	75.1	84.2	106.7	87.8	101.9
Sales to List Price Ratio	101.9	100.2	96.9	101.3	99.8	97.8	97.9
Median Days on Market	16.0	19.0	45.5	16.0	65.0	71.0	64.0

Year-to-date	July 2019	Compared to ⁶					
		July 2018	July 2017	July 2016	July 2014	July 2012	July 2009
Sales Activity	51	-23.9	-58.5	-45.7	-10.5	-12.1	-10.5
Dollar Volume	\$13,357,415	-25.9	-52.3	-26.0	32.0	45.0	62.8
New Listings	56	-25.3	-55.9	-49.5	-37.8	-52.1	-55.9
Active Listings ³	7	-28.2	-63.6	-71.0	-82.5	-89.7	-91.4
Sales to New Listings Ratio ⁴	91.1	89.3	96.9	84.7	63.3	49.6	44.9
Months of Inventory ⁵	1.0	1.1	1.1	1.9	5.1	8.5	10.5
Average Price	\$261,910	-2.7	15.0	36.4	47.5	64.9	81.9
Median Price	\$244,500	-2.2	19.3	50.5	64.6	69.3	88.2
Sales to List Price Ratio	103.4	100.7	103.6	99.9	97.6	97.9	96.4
Median Days on Market	15.0	18.0	19.0	24.5	51.0	57.0	70.0